

INSTALLATION INSTRUCTIONS

NOTE: This kit is not to be used as a replacement seat. It is not safe for passengers to ride on the panel.

Seat Removal:

1. Remove lower seat cushions by removing the two 10mm bolts exposed at the front edge. Push DOWN on the rear edge of the seat cushion to release it from a hidden bracket for removal.
2. With seatbacks up, remove the 2 bolts holding the child seat mounting bracket on each side. **You will reuse the top hole and bolt from this location**, so save one of these bolts with the built-in washer. →



3. Remove the rear trunk mat temporarily. (3 push clips secure it to the frame, pop these out)

4. ← With seats folded down, remove the 12mm mounting bolts (1 on each side).

5. Remove the 2 plastic clips holding the rear soft trunk panel trim to the hard plastic trim. →



To remove the large side panels:

6. First pull the rear edge of the door sill up to release the clip there. →
7. Pull away the rubber door gasket only where the side panel meets up.



8. Remove the single black plastic pin from each side (near the lower seatbelt connections) →

9. ← Remove each side panel by firmly pulling it away from the metal structure. It is held in place with several white push clips. If the white clips stay in the metal after the panel is off, pry out the clips and put into the proper place on the plastic panel for easy reinstallation later. Do this for both sides.



10. Remove the 3 bolts on each side holding the large black seat brackets. Remove from the car. Reinstall the bolts to seal the holes, and tighten. →

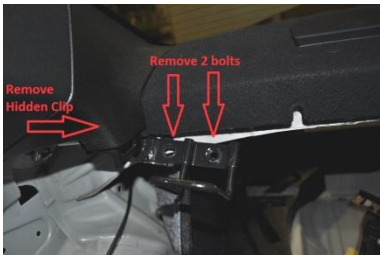
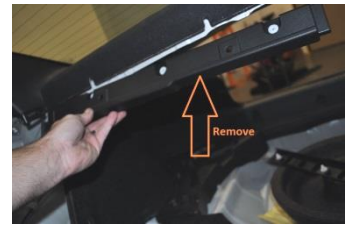


11. ← There are 4 plastic clips at the upper shelf area. Remove these. They will not be reinstalled.



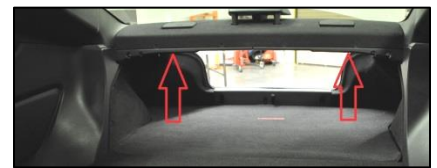
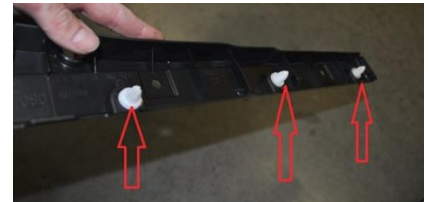
12. There are two long plastic trim pieces where you just removed the clips. These must be temporarily removed for easy access to the bolts for the upper seat hooks. There are 3 white push clips holding each of these trim pieces. Pop those out and remove the trim, to expose the bolts. →

NOTE: If you have a 12mm ratchet wrench, you might be able to access the bolts without removing this trim.



13. ← Remove the upper seat hooks. There are 2 12mm bolts on each side, and 1 hidden plastic clip on each side.

14. Reinstall the 2 long trim pieces. If any of the white clips stayed in the metal frame, pry them out and reinstall on the plastic trim before reinstallation. Do not reinstall the black plastic push clips. →



Seatbelt Removal (optional):

NOTE: Removing the rear seat belts is **optional** but recommended for the most weight loss, and cleanest installation. While the side panels are already off, it doesn't take long to remove or reinstall them. If you prefer NOT to remove the seat belts, you can tuck the belt behind the side panel so it's not visible. To prevent metal buckle from rattling against the car, wrap buckle in Painter's Tape to prevent tape residue from melting onto the belt buckle on hot days.



- Remove the 2 lower seatbelt connections near the center tunnel (14mm bolts). **(See photo at Step 2 above)**
- ← Remove the main seatbelt assembly. There is one 14mm bolt at the bottom. The top is held in place by one 17mm nut.

- The seatbelt assembly mounting bracket at the top can also be removed for additional weight savings if you choose. This is optional. →

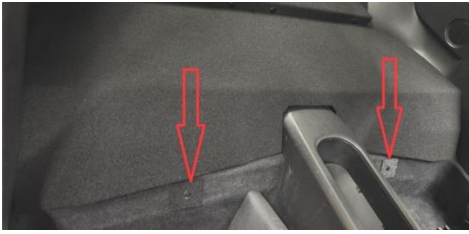


15. Reinstall the side panels by pushing firmly near the white plastic clips. It should fully lock into place. If a clip doesn't feel like its going in, don't force it, check to make sure it lined up with the proper hole.

16. Reinstall the 2 black plastic clips securing the soft trunk panel trim to the hard plastic trim on each side.

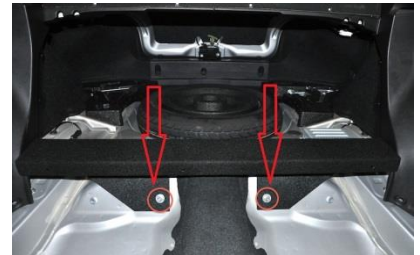
17. Position the rubber door gasket back into place, and press the door sill back down.

Installation of Rear Seat Delete



1. ← Supplied with your kit are 2 black ABS Plastic covers and 2 push pins. These are used to cover the exposed metal frame at the lower lip of the rear seats.

2. Install the RSD center support brace. It mounts to the top 2 holes of the child seat mounting brackets using the 2 bolts with built-in washers that you saved from step 2 above. This brace is adjustable up and down for final fitment with the lower panels. For best results, start with the brace pushed up as far as it will go before you tighten these 2 bolts. After complete installation, there are fitment issues (due to variances from car to car), you can adjust this support brace downward. →



3. ← The Lower Panels are split into left and right sides so each side can be lifted for individual separate storage compartments. Install one of the Lower Panels by sliding the rear uncarpeted lip BEHIND the lip of the support brace. Push 2 of the supplied plastic push pins through the Lower Panel into the pre-drilled holes on the Support Brace. You may have to use your hand behind the panel to hold it as you press the fastener through.



4. Do the same attachment process for the opposite Lower Panel.

5. The Rear Back Panel already has 4 fasteners attached that will line up with the 4 factory holes near the top of the rear seat area. The 4 holes previously had OEM plastic fasteners that should have been removed in previous steps. Press the 4 pre-installed fasteners firmly into the holes. →



6. For quick access to the trunk for carrying long objects, firmly tug at the top of the panel near each of the 4 fasteners to release the fastener from the car. You can lay it down like this. →



7. If you have the sound insulation kit, lay the extra sound deadening material under the lower panels to block noise. You're done!